



Volume 8, Number 7

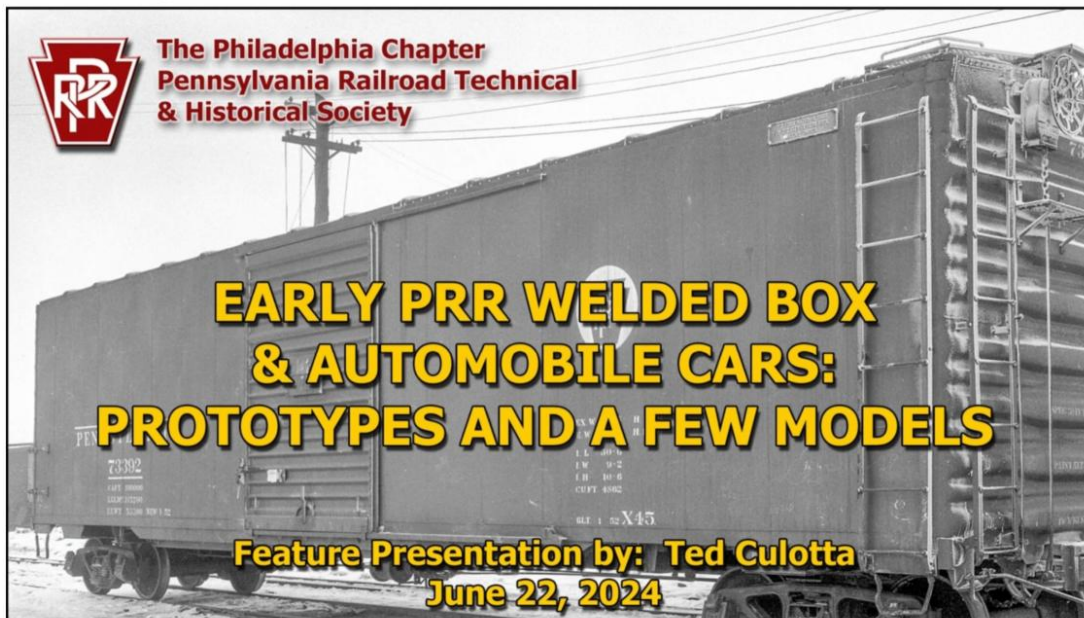
July 2024

The NMRA's *Turntable* is a monthly publication that, like a railroad turntable, will lead you in several directions on the internet.

This e-publication is a collection of railroad and model railroad videos, podcasts, websites, and/or other information freely available on the internet that we think may be of interest to you. The NMRA claims no ownership of this information, nor do we endorse its creators or their websites. The *NMRA Turntable* will not promote individuals or their for-profit ventures.

Having trouble seeing this email? [View as Webpage](#)

Early PRR Welded Box & Automobile Cars



[Early PRR Welded Box & Automobile Cars](#)

Ted Culotta discusses the Pennsy's building of welded house cars in 1936 and continuing into the 1950s; also building several interesting proprietary designs before transitioning to more standard types in the mid-1950s. This presentation highlights these cars as well as how to model many in HO scale.

5 Simple Methods to Weather Track





[5 Simple Methods to Weather Track](#)

In this video, Nscaler454 is adding a water feature on his layout using Woodland Scenics Realistic Water. Along the way he tests various ways to seal the path that the "water" will follow, as this is his first time using this product.

Scratch Build an HO Scale OTM Tracker



[Scratch Build an HO Scale OTM Tracker](#)

Paul B. shows how he built an OTM Tracker, a maintenance of way vehicle that rides on top of the sides of a gondola car and has the ability to move from car to car.

California Commuter Trains at Speed





California Commuter Trains at Speed

A video showing multiple California Commuter Trains at speed in various locations.

San Diego Model Railroad Museum Tour

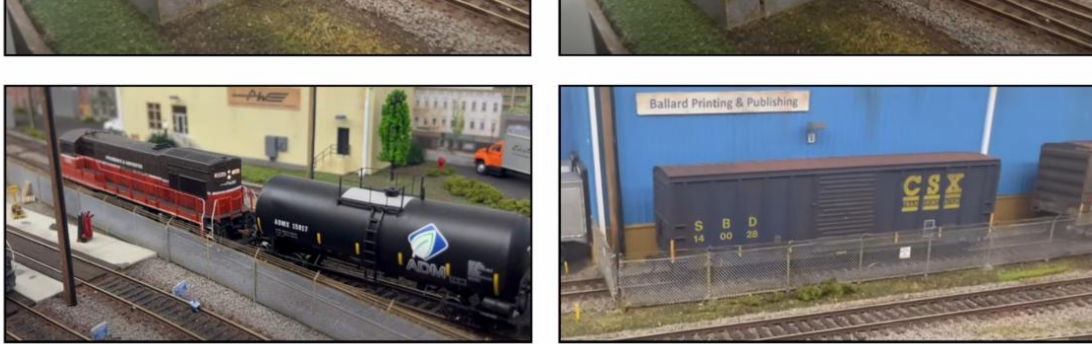


San Diego Model Railroad Museum Tour

“The mission of the San Diego Model Railroad Museum is to research, collect, preserve, and present the heritage of American railroading using educational programs, displays, toy trains, and scale models of California railroads. Spanning over 27,000 square feet of trains, trestles, and tracks we are in the heart of natural beauty framed by the majestic backdrop of Balboa Park. At every twist, turn, and tunnel we spark curiosity with developing educational programming that includes education milestones like critical thinking, creativity, and problem solving.” SDMRM

Separation Fencing - Yard & Industries





Separation Fencing - Yard & Industries

Using scratch-built fencing to create linear separation between the yard from the main. Wedding Tulle (veil) and styrene rod to make a chain link fence.

Model Railway Build - Planning the Layout



Model Railway Build - Planning the Layout

Dawn Quest's new BRAND-NEW MODEL RAILWAY BUILD: The Ladykillers - Episode 1. Based on the classic Ealing comedy, this is the very first episode in her step-by-step series on how to build an exhibition standard layout, whether you're a complete beginner or a veteran, and whether you want to exhibit, or your layout will take pride of place in the loft!

In this episode Dawn walks you through the three important criteria to bear in mind when building an exhibition layout, PLUS all the details of the layout, including baseboard, levels, track and wiring, houses and structures and rolling stock.

Review: Rapido HO Budd Slumber Coach





[Review: Rapido HO Budd Slumber Coach](#)

James Wright reviews the Rapido Trains, Inc. HO scale Budd Slumber Coach with Interior and Underbody Max Detail in two road names, Missouri Pacific and also Amtrak phase 1.

SurfLiner 2024 - NMRA National Convention

SurfLiner 2024
 NMRA National
 Convention
 Long Beach, California
 August 4th-11th, 2024

To visit our website:

SURELINER

<https://SurfLiner2024.org>

[SurfLiner 2024 in Long Beach, CA](#)

A great convention needs an amazing location, and our hotel is the Westin Long Beach in downtown Long Beach. The Westin Long Beach is just two blocks from the beach, harbor, and pier. Directly across the street is the Center for Performing Arts and the Long Beach Convention & Entertainment Center.

This just in:

OPSIG Operating Session Signup now available, look for a link in the Convention Update News box on the [main page](#).

The [Convention Timetable](#) is available. Updates to the Timetable will occur frequently, so check on it from time to time.

NOTE: The times & days of operation of the **Celebration** (Contest) room (Centennial B on 3rd floor) are different from previous years:

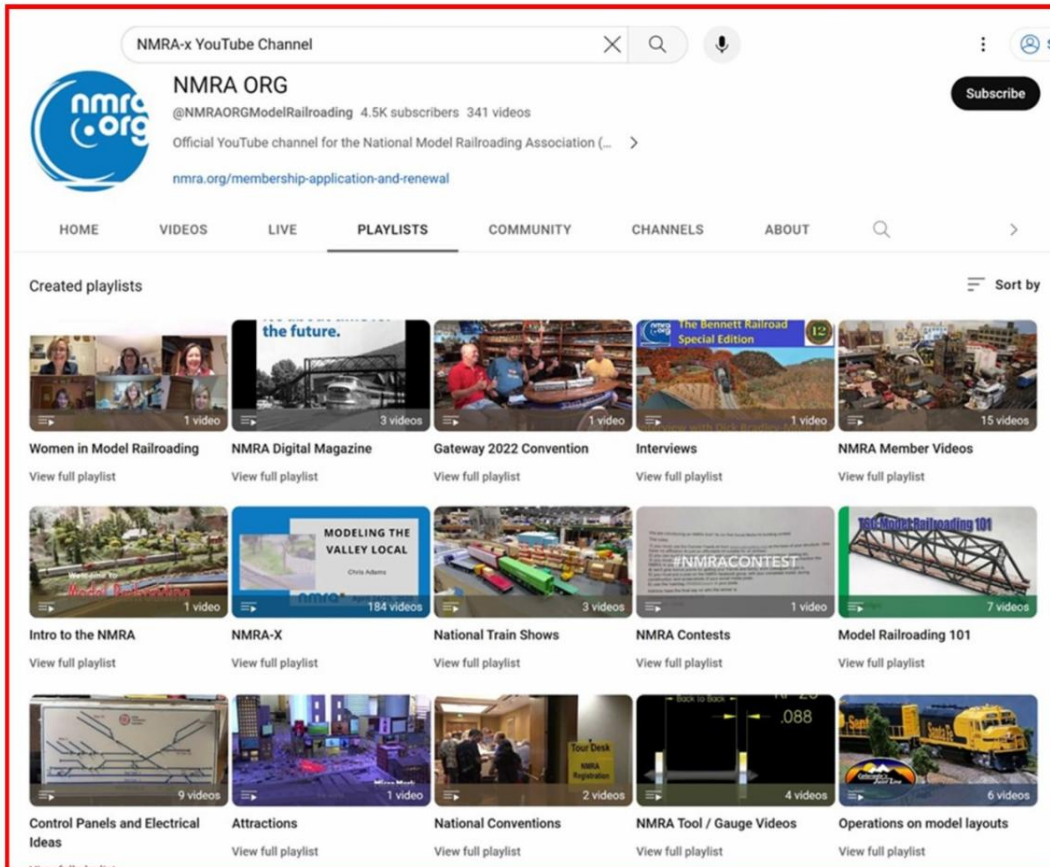
Sunday, August 4th - 6pm to 9pm

Monday, August 5th - 8am to 6pm

Tuesday, August 6th - 8am to 11am
Wednesday, August 7th - 6pm to 9pm
ALL ENTRIES must be picked up WEDNESDAY NIGHT!
Thursday, August 8th - 2pm to 4pm Awards Ceremony

The Convention Team looks forward to seeing you in August!

NMRA-x YouTube Channel

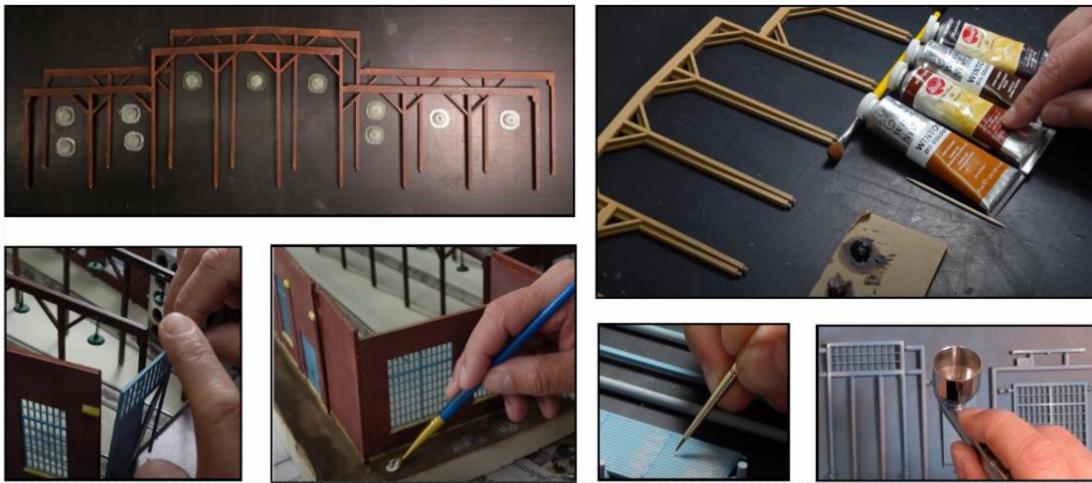


[NMRA-x YouTube Channel](#)

This is the Official YouTube channel for the National Model Railroad Association (NMRA). Here you will find over 350 videos including clinics, layout tours, reviews and how-to presentations along with the popular NMRx clinics, all told there is about seven years' worth of material to look over and watch!

Build & Detail a Walthers Roundhouse





Build & Detail a Walthers Roundhouse

Custom-designed 3D printed parts and LEDs were used to detail and light this Walthers 3-stall roundhouse.

Amtrak Pacific Surfliner Trains



Amtrak Pacific Surfliner Trains

Amtrak's Pacific Surfliner is one of the busiest intercity passenger rail routes in the United States. In this video, CoasterFan2105 returns to Southern California during the first half of 2022 to see Pacific Surfliner trains traveling in San Diego County and Orange County. Stops include many well-known photo and video locations to see these sleek looking

passenger trains skirt the waters of the Pacific Ocean.

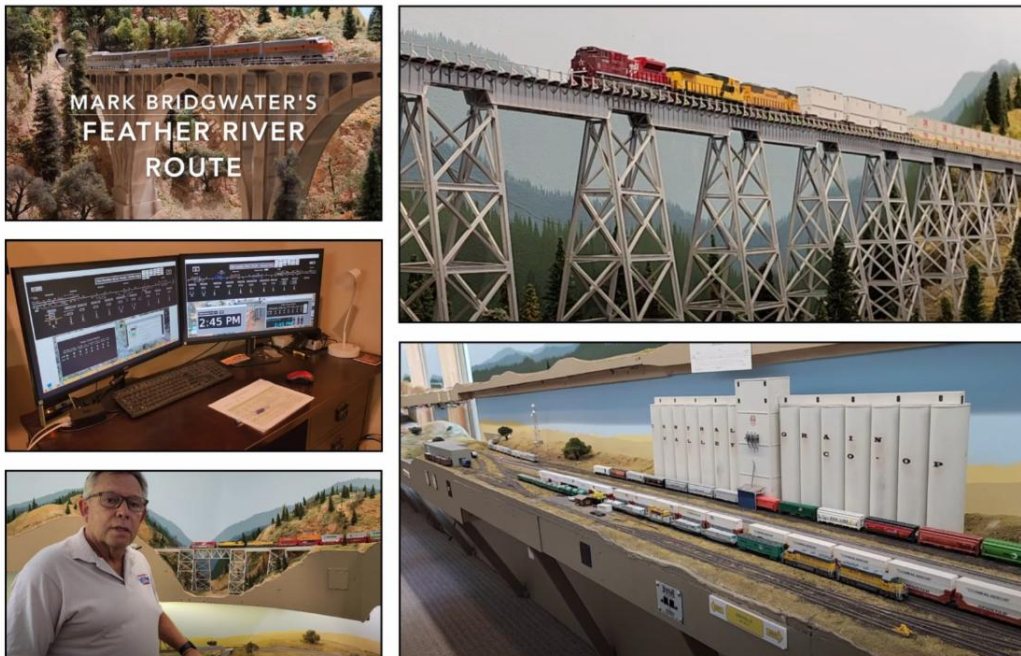
Modeling Birch/Aspen Trees



Modeling Birch/Aspen Trees

Follow along to see the presenter's technique for making Birch/Aspen trees by the dozens.

Mark Bridgewater's Feather River Route



Mark Bridgewater's Feather River Route

Here's an overview video of Mark's Feather River Route N-scale layout as of July 2024, with some railfanning shots thrown in. Mark has decided to sell the layout due to a move to a larger basement and starting a new freelanced HO layout.

The layout, built in standardized and independent modules that are 6' and 8' long, 15" and 18" wide, plus the corners, can be reassembled in multiple configurations to suit your room size and modeling preferences.

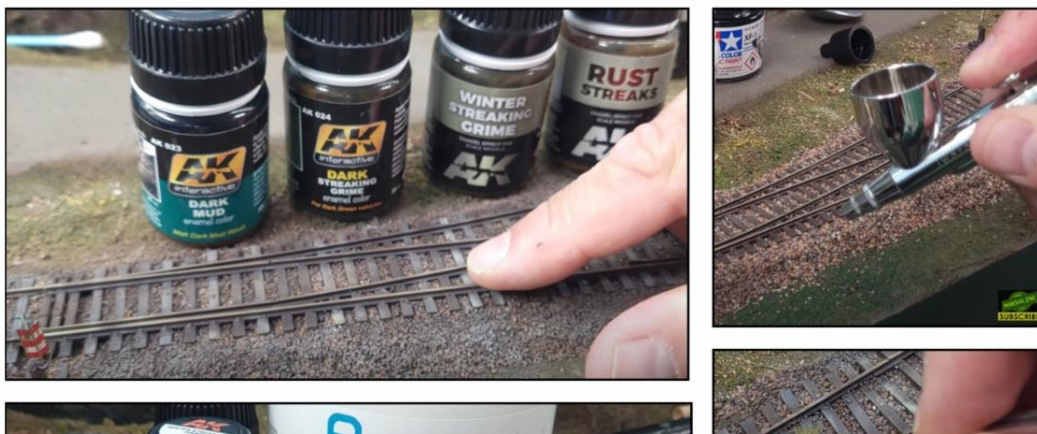
Planning to Scratch Build a Car Ferry



Planning to Scratch Build a Car Ferry

This is the very beginning of the Carrier Princess scratch-build for the HO Scale Shelf Layout - 'River Road.'

5 Simple Methods to Weather Track





5 Simple Methods to Weather Track

In this video, Andy Dorsch shows you some basic techniques on how to weather your track work and add details that bring your model railroad to life! The tools, materials and techniques can also be applied to other areas of model railroading such as scenery, structures, rolling stock and locomotives!

NMRA's Partnership Program

PARTNERSHIP PROGRAM

NMRA members can log in and click on the **Benefits** tab to view the **NMRA Partnership Program**. Please patronize all of our partners for some fantastic discounts as an NMRA member!

<ul style="list-style-type: none"> Bespoke Rail CatzPaw Innovations CB Train Junction Clever Models, LLC Coastmans Scenic Products Composite Designs, Inc. CMR Products, LLC Conowingo Models Cowcatcher Magazine Daylight Sales (Merchandise) Deepwoods Software Deluxe Materials Diorama Hobbies Dwarvin Enterprises, Ltd East Coast Circuits Enterprise and National Car Rental Services Evan Designs Feight Studios Fusion Scale Graphics Gatorfoam Great Decals! Green Frog Productions Highways and Byways Model Railroad Graphics Hot Wire Foam Factory 	<ul style="list-style-type: none"> Ipswich Hobbies* ITLA Scale Models K.I.S.S Method, Inc. LaBelle Woodworking Co. LARC Products Logic Rail Technologies MAC Rail Micro-Mark Mine Mount Models Miniprints MrTrain.com Model Railroad Benchwork Model Railway Backshop* MRC (Model Rectifier Corp) Model Train Catalogue Modelers Decals & Paint Motrak Models Mudd Creek Models New Creations Victorian Railroad Buildings Nick and Nora Designs Northlandz NScale Works by Mike Holly Old Depot Gallery Old West Scenery RAM Track 	<ul style="list-style-type: none"> RR-CirKits R & J Details Scale Model Plans Scale Railroad Models Scenery Solutions Showcase Miniatures T-Trak by Denniston Team Track Models The N Scale Architech The Old Depot Gallery Tichy Train Group Touch of the Brush Model Weathering Train Installations, LLC Train Show, Inc. Trainmasters TV/Model Railroad Hobbyist Store TRAINZ.com TSG Multimedia UGEARS USA Airbrush Supply/ Badger Airbrush White Rose Hobbies, LLC* WiFi Model Railroad, LLC Yelton Models
--	--	--

[New Partners in RED*] June 2024

Partnership Program

NMRA@HOME



Structure Details

Featured in the *Division Business Car Column* appearing in the August 2024 issue of NMRA Magazine.

Jeff Cooper takes a closer look at structure details that are often overlooked by modelers in the *RPO*, the newsletter of the Mid-Continent Region's Gateway Division.

An Unconventional Railroad Crossing

Featured in the *Division Business Car Column* appearing in the August 2024 issue of NMRA Magazine.



There's a prototype for everything. How about a drawbridge carrying track above another track only inches below it? Kelly Russell, MMR® shared photos and information in *The Derail*, published by the 100% NMRA Member San Jacinto Model Railroad Club in Houston, TX.



John Whites' On30 Skagit Valley Eastern

Featured in the *Division Business Car Column* appearing in the August 2024 issue of NMRA Magazine.

Rich Thom of the Pacific Northwest Region's 4th Division takes you on a virtual tour of the late John Whites' Skagit Valley Eastern Railroad in the *Grab Iron*, the division's newsletter.

To Tip or Not to Tip

Featured in the *Division Business Car Column* appearing in the August 2024 issue of NMRA Magazine.



Are you always tipping bottles over on your workbench, spilling their contents? Jim Walsh of the Northeastern Region's Garden State Division shows you some quick and easy devices you can make to prevent future spills in *The Whistle Post*, the division newsletter.



Upgrading Your Layout

Featured in the *Division Business Car Column* appearing in the August 2024 issue of NMRA Magazine.

There are likely a lot of things on your layout that need upgrading. However, you don't see them because you stopped seeing what's really there. But your visitors see them. To help "frame" the problem, Robert Sprague of the Mideastern Region's Potomac Division provides you with three ideas to help you find these areas needing upgrades in the division newsletter, the *Potomac Flyer*

The ***Division Business Car*** column appears in even-numbered months in NMRA Magazine. It's loaded with great modeling ideas, plus useful information that can help make your Division, Region, or 100% NMRA Club even better. The information comes from articles published in Region, Division, and Club newsletters. The best of these articles are posted on the NMRA website. You can read the entire archive, from as far back as 2011 right up to the latest posting, by clicking [here](#).

Previous issues of the **NMRA Turntable** are available on the Turntable Archives page. You must first log in as a member at: nmra.org After you are in the members-only section, then you must hover over 'Publications' on the menu bar, then 'NMRA Turntable', and then click on one of the list of back issues.

Editor: [Paul Voelker, HLM](#)

Executive Editor: [Rick Coble](#)

The NMRA Turntable is an official monthly production of the National Model Railroad Association, Inc. Publishing Department (Riley Triggs Manager). Its purpose is to introduce NMRA members to a selection of instructional videos and online publications that they may find of interest. If you know of an NMRA member who is not receiving this mailing, please direct them to [here](#) to update their email address. If you no longer wish to receive these mailings, please don't mark them as SPAM. Instead, click the Safe Unsubscribe link at the bottom of this page. ©2021 National Model Railroad Association, Inc., P.O. Box 1328, Soddy Daisy TN 37384.

